



8



11



12



13



14



15



16



17



18



19



20



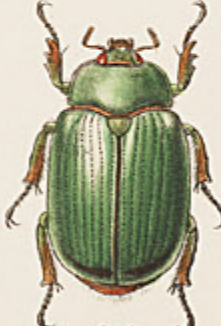
21



22



23



24



25

- 1, 1a ♀ PHANÆUS SCUTIFER.
 2, 2a ♂ " TEPANENSIS.
 3, 3a ♂ " " var.
 4, 4a ♂ " EXCELSUS.
 5, 5a ♂ " " var.
 6, 6a ♂ ONTHOPHAGUS UNDULANS.
 7, 7a ♂, 8 ♀ " INELATICOLLIS.
 9, 9a ♂ ONITICELLUS RHINOCERULUS.
 10, 10a ♂ ONITICELLUS RHINOCERULUS.
 11 APHODIUS CONSTRICTICOLLIS.
 12 DIPLLOTAXIS ALUTACEA.
 13 " AURATA.
 14 ♂ PHYTALUS OMILTEMIUS.
 15 ♂ LACHNOSTERNA BARONI.
 16 ♂ " ROSTRIPYGA.
 17 ♀ LACHNOSTERNA CRINIPENNIS.
 18 ♂ " GODMANI.
 19 ♂, 20 ♀ METAPACHYLUS SULCATUS.
 21 PLUSIOTIS RODRIGUEZI, var.
 22 " ALTICOLA.
 23 ♀ CHRYSINA ERUBESCENS.
 24 PLUSIOTIS ORIZABÆ.
 25 COTINIS SALICIS.

W. Purkiss lth.