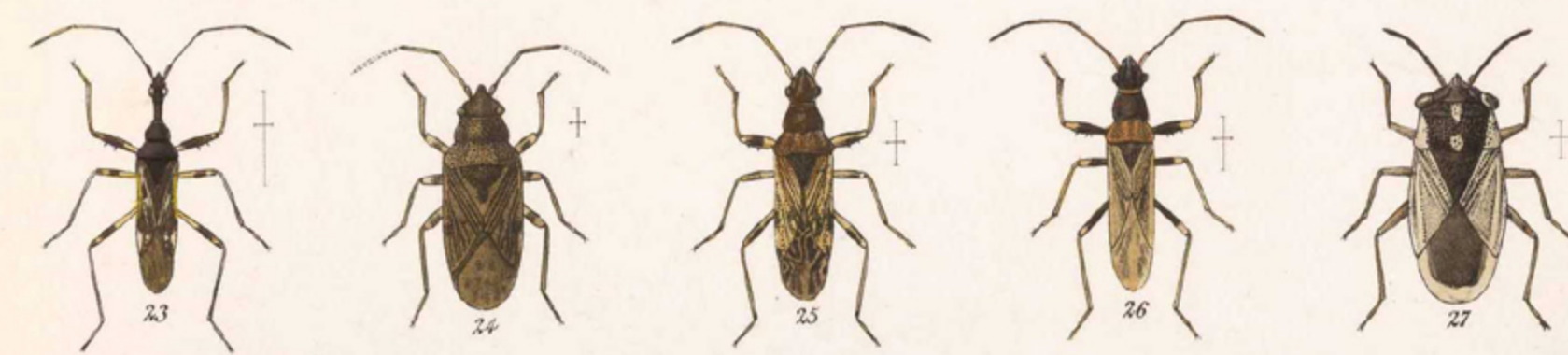


Ochrinas?



- | | | |
|----------------------------|-------------------------------|----------------------------|
| 1 ONCOPELTUS SEXMACULATUS. | 10 LYGÆUS PALLESCENS, var. | 19 LIGYROCORIS LITIGIOSUS. |
| 2 LYGÆUS KALMI. | 11 " NIGRIGUTTULUS. | 20 " BALTEATUS. |
| 3 " RUFICEPS. | 12 " RUBRIGER. | 21 " ABDOMINALIS. |
| 4 " TRUCULENTUS. | 13 " CIRCUMLINITUS. | 22 MYODOCHA LONGICOLLIS. |
| 5 JADERA HÆMATOLOMA. | 14 " VITTISCUTIS. | 23 " GIRAFFA. |
| 6 LYGÆUS PYRRHOPTERUS. | 15 ACROLEUCUS BREVICOLLIS. | 24 PLOCIOMERA OBLONGA. |
| 7 " PALLESCENS. | 16 " TULLUS. | 25 PAMERA BILOBATA. |
| 8 " INTERSTINCTUS. | 17 PACHYGRONTHA CEDANCALODES. | 26 " LONGULA. |
| 9 " CRUENTATUS. | 18 LIGYROCORIS MULTISPINUS. | 27 GEOCORIS LIVIDIPENNIS. |