



1



2



3



4



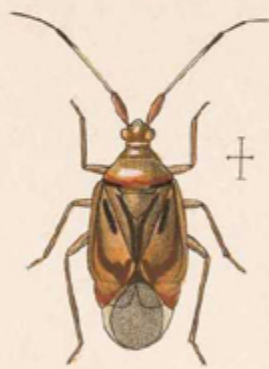
5



6



7



8



9



10



11



12



13



14



15



16



17



18



19



20



21



22



23



24



25

- | | | | | | | | | |
|---|---------------|-------------|----|--------------|----------------|--------|------------|-----------------|
| 1 | ECCRITOTARSUS | SPLENDENS. | 9 | PSEUDOCARNUS | MAGNUS. | 17 | NEOFURIUS | DECORATUS. |
| 2 | " | VESTITUS. | 10 | FUNDANIUS | MACULATUS. | 18 | " | INFUMATUS. |
| 3 | PSEUDOBR | YOCORIS | 11 | " | PALLESCENS. | 19 | " | HIEROGLYPHICUS. |
| 4 | MONALOCORISCA | GRANULATA. | 12 | " | ALBOMACULATUS. | 20 | " | PALLIDULUS. |
| 5 | " | RAVIDA. | 13 | NEOFURIUS | VILLOSUS. | 21 | " | PLAGOSUS. |
| 6 | CARNUS | LUNATUS. | 14 | " | AURATUS. | 22 | " | LINEARIS. |
| 7 | " | PARVUS. | 15 | " | AMETHYSTUS. | 23, 24 | BIBACULUS | MODESTUS. |
| 8 | PSEUDOCARNUS | LINEOLATUS. | 16 | " | SCRIPTUS. | 25 | PARACARNUS | ELONGATUS. |