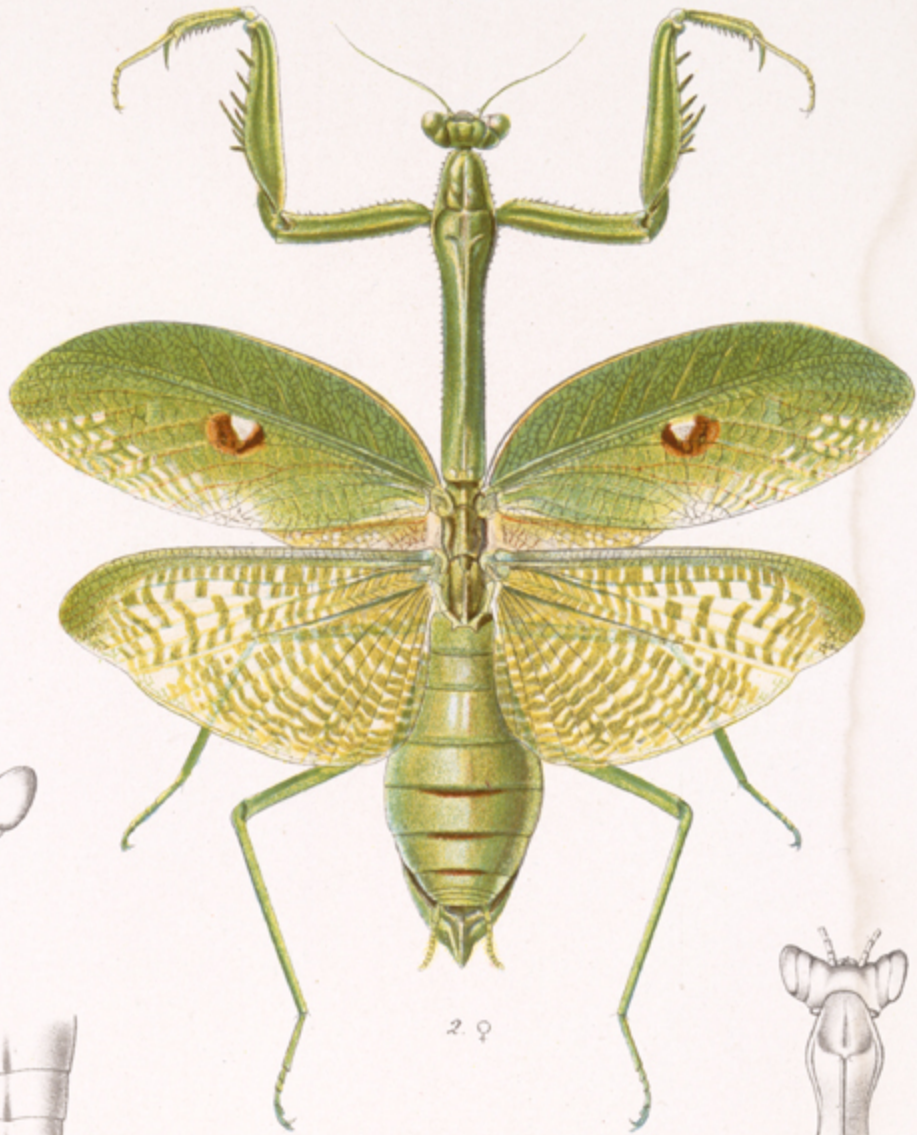




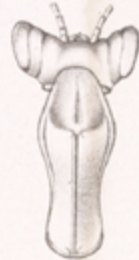
1. ♂



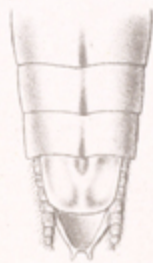
2. ♀



3. a



3. b



3. c



3. ♂



4. ♂



4. a



4. b



5. ♀

1. ANGELA PERPULCHRA.
 2. STAGMATOPTERA SEPTENTRIONALIS.
 3. 3a, b, c. LITHANEUTRIA OCULARIS.

4, 4a, b. HARPAGONYX GRYPUS.
 5. THEOCLYTES HOFMANNI.